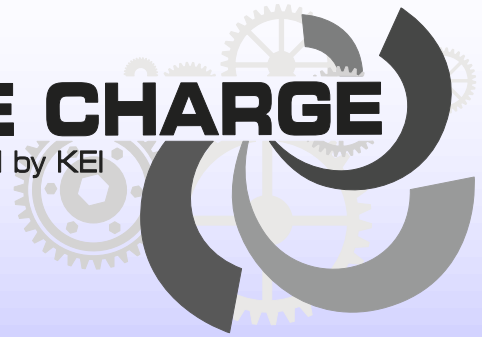


# Model KGV240I-B

## 2 Pin

# SURE CHARGE

Manufactured by KEI



Verify  
2 Pin  
Connection  
If there's a  
4 pin  
connection  
then you need  
Model  
KGV240I



**Internally Regulated  
2-Pin**

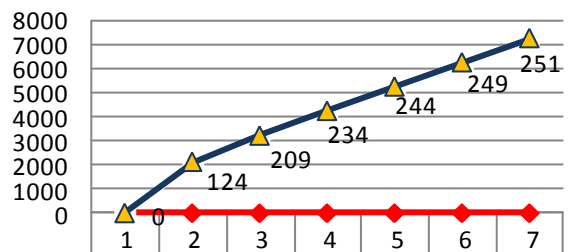


## Application Guide

2006-2011 Chevrolet/GMC  
With 6.0/8.1L Gas/6.6L Diesel  
Designate Clocking 2/8/or 10

Shuttle Bus, School Bus, EMS  
Utility Vehicles, Cadillac Limo's  
H2 Humvee Limo

## Alternator Output



▲ Amps	0	124	209	234	244	249	251
● Rotor RPM's	0	2000	3000	4000	5000	6000	7000
● Volts	13.5	13.5	13.5	13.5	13.5	13.5	13.5

## Important Facts

**New OEM Install Warranty : 3 Years or 100,000 Miles**  
**New Aftermarket Install Warranty : 1 Year or 100,000 Miles**

- **SURE CHARGE** KGV240I-B model alternators have 6 positive and 6 negative diodes which will virtually eliminate diode failure.
- **SURE CHARGE** stators are wound with heavy 11 gauge and dual 12 gauge wire, which eliminates stator failure.
- **SURE CHARGE** rotors are balanced for increased bearing life.
- **SURE CHARGE** uses NTN bearings with a large cartridge, high temperature Kyodo-Yushie grease, and double seals. This helps contribute to long bearing life.
- **SURE CHARGE** alternators are made in the USA



**WHEELS BUS PARTS & INSTALLATION**

A Product of:

**Wheels Bus Parts and Installations**

**478-361-2835**

Justin TX